

Lincolnshire JSNA

Published March 2023



What is the JSNA?

- Joint Strategic Needs Assessment
- Ongoing Assessment of Current & Future Health Needs
- Evidence Repository
- Underpins Local Decisions and Planning
- Statutory Requirement



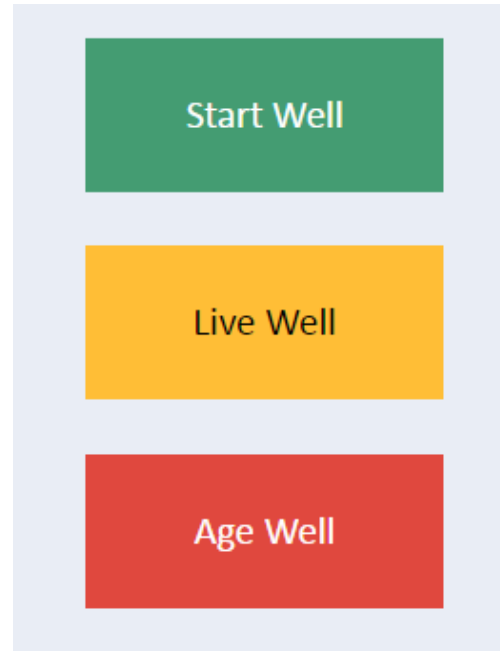


What's new for the 2023 JSNA?

- Redeveloped JSNA
- Life course approach
- Concise, user friendly, newly designed platform
- Interactive data reporting for all topics
- Automated data refreshes
- All hosted on a bespoke and newly launched website
 - the Lincolnshire Health Intelligence Hub

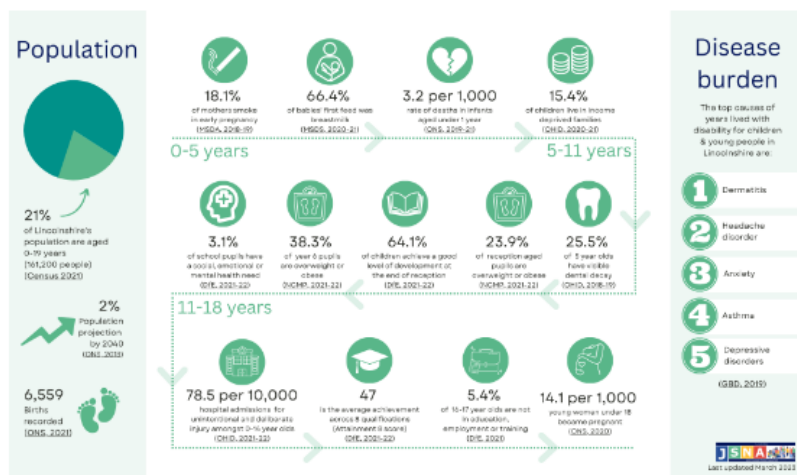
The Life Course Approach

The JSNA Factsheets are divided into three Life Courses





Start Well is all about our children and young people in Lincolnshire, aged 0-19 years old. It reiterates the importance of affording every child the best start in life and the opportunity to grow, live and thrive. Factors before and during pregnancy, during the early years, and throughout childhood can impact health and wellbeing in adulthood.



Breastfeeding

Children in Care

Children in the Criminal Justice System

Early Years Development

Healthy Weight

Immunisation

Mental Health & Emotional Wellbeing

Oral Health

Physical Activity

Pregnancy & Maternal Health

Schools & Achievement

Special Education Needs and Disability

Tackling Tobacco Use

Young Carers

Other Useful Resources

- Child & Maternal Health Profiles
- Local Authority Interactive Tool (LAIT)

Infographic video gives an overview of the life stage and key features in Lincolnshire

Easily navigable links to all life stage factsheets

Links to other useful resources outside the Lincolnshire Health Intelligence Hub relevant to the life stage

Downloadable infographic and key points for each life stage giving an overview of the population and the key issues

The New JSNA Factsheets

Healthy Weight

Home > JSNA > Live Well > Healthy Weight

1. Background

2. Policy Context

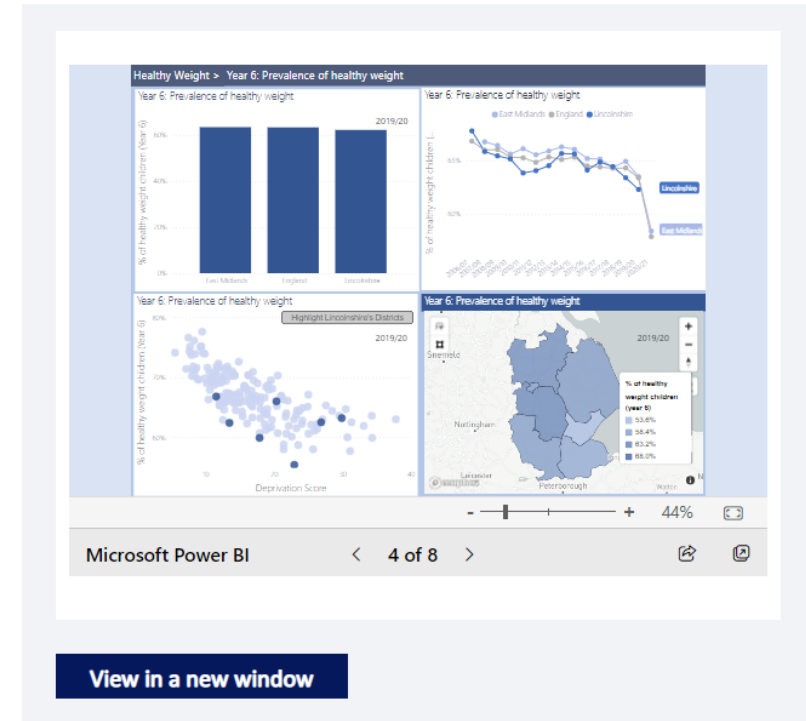
3. Local Picture

4. Local Response

5. Community & Stakeholder Views

6. Gaps and Unmet Needs

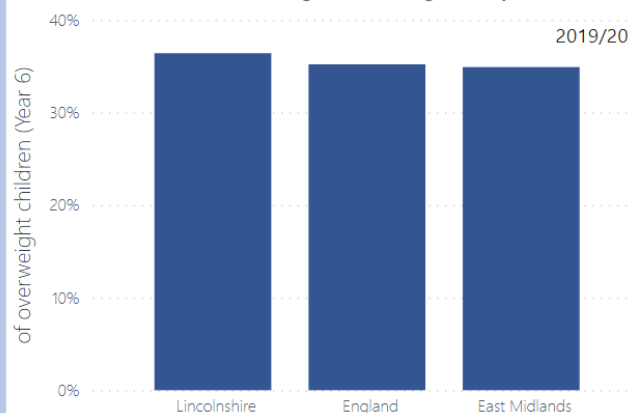
7. Next Steps



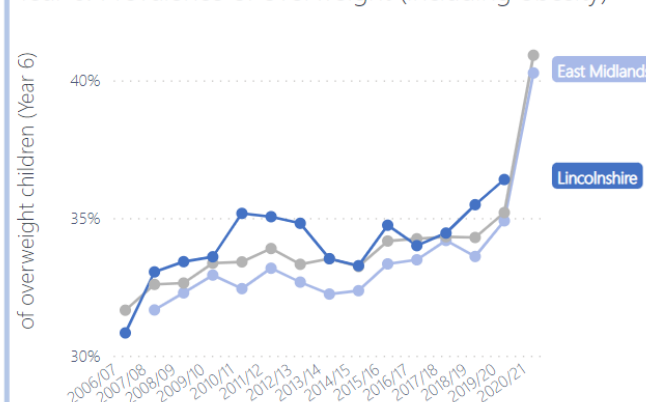
New Interactive Reporting

Healthy Weight > Year 6: Prevalence of overweight (including obesity)

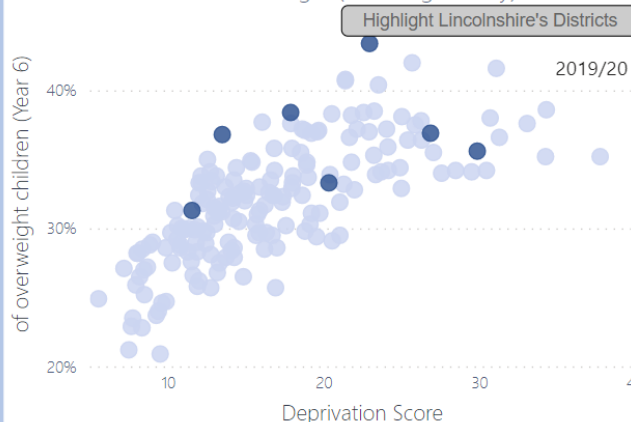
Year 6: Prevalence of overweight (including obesity)



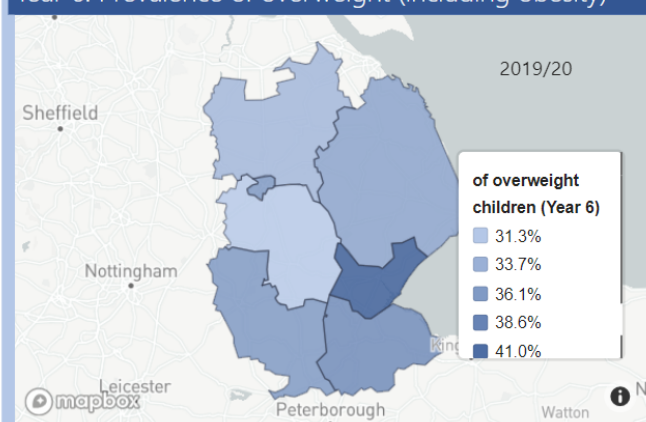
Year 6: Prevalence of overweight (including obesity)



Year 6: Prevalence of overweight (including obesity)



Year 6: Prevalence of overweight (including obesity)



Indicator data collated and presented from a range of sources relevant to the factsheet

Easy to interpret interactive information:

- Regional and national comparisons
- Trend analysis
- Inequality plotting
- Geographical mapping

Routinely updated indicators

What else is new...

- Updated JSNA glossary
- JSNA FAQs
- JSNA in pictures
- All hosted on the new Lincolnshire Health Intelligence Hub (lhih.org.uk) – a broad repository of population, health and wider determinants information and intelligence.



Our People



Our Place



Joint Strategic
Needs Assessment



Statutory
Publications



Profiles



Get involved

The JSNA is continually being updated and everyone's input is valued.

If you would like to contribute, please get in touch by emailing JSNA@lincolnshire.gov.uk



Thank you

Any questions?